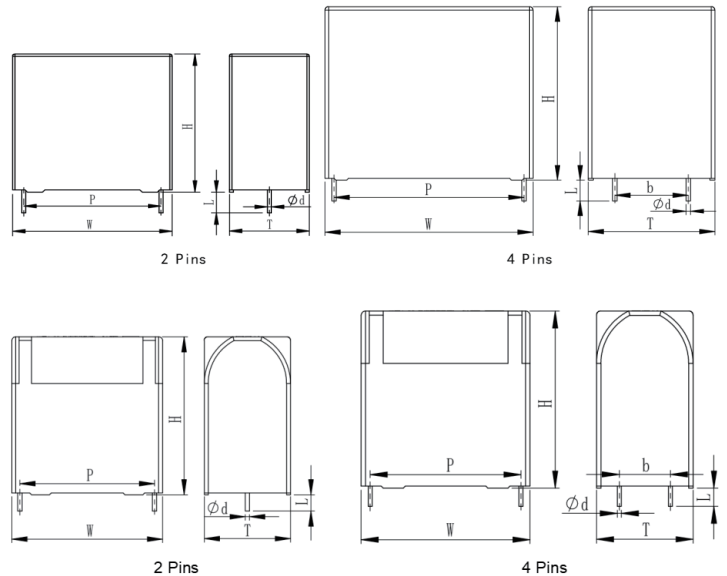
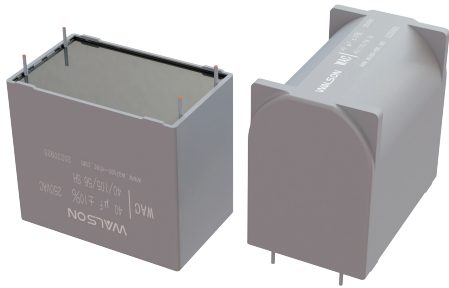


WAC 交流滤波电容器 (PCB) AC Filter Capacitor for PCB

外形图 Outline Drawing



单位 Unit: mm

特点 Features

- 金属化聚丙烯膜，自愈性好，可靠性高
- 阻燃塑料外壳和环氧树脂封装，镀锡铜线引出端
- Metallized polypropylene film, good self-healing property and high reliability
- Flame-resistant plastic case and epoxy resin sealing, tinned copper terminals

主要用途 Typical Applications

- 适用于小功率交流滤波电路，如UPS、光伏DC/AC逆变器中的LCL滤波
- Suitable for small power AC filter circuit, i.e. UPS, solar photovoltaic DC/AC inverter with LCL filter

技术要求 Specifications

引用标准 Standard Adopted	GB/T 17702 (IEC 61071)			
气候类别 Climatic Category	40/105/56			
工作温度 Operating Temperature	-40~+105℃ (+85℃ to +105℃: decreasing factor 1.5% per °C for U_{rms})			
额定均方根电压 U_{rms} Rated RMS Voltage	180Vac	250Vac	300Vac	350Vac
额定交流电压 U_N Rated AC Voltage	250Vac	350Vac	425Vac	480Vac
额定交流电压 U_N Rated AC Voltage	250~630Vac			
电容量范围 Capacitance Range	0.33~60uF			
耐电压 Voltage Proof	2.15 U_{rms} or 1.5 U_N (10s)			
绝缘电阻 Insulation Resistance ($IR \times C_V$)	$\geq 5000s$ (20℃, 100V, 1min)			
损耗角正切DF Dissipation Factor	≤ 0.0015 (1kHz, 20℃)			

■ 外形尺寸 Dimensions (mm)

U _{rms} =180Vac U _N =250Vac U _{NDC} =300V										
C _N (μF)	W±1.0 (mm)	H±1.0 (mm)	T±1.0 (mm)	P±0.5 (mm)	b±0.5 (mm)	d±0.05 (mm)	R _{esr} @10kHz (mΩ)	İ (A)	İ _s (A)	I _{max} (A)
4.0	32.0	22.0	13.0	27.5	-	1.0	6.7	280	840	7.0
5.0	32.0	28.0	14.0	27.5	-	1.0	5.3	350	1050	8.0
6.8	32.0	33.0	18.0	27.5	-	1.2	3.9	476	1428	11.0
10.0	32.0	33.0	18.0	27.5	-	1.2	2.7	700	2100	13.0
10.0	41.5	32.0	17.0	37.5	-	1.2	4.9	400	1200	10.0
15.0	41.5	37.0	22.0	37.5	-	1.2	3.3	600	1800	14.0
18.0	42.0	37.0	22.0	37.5	-	1.2	2.7	720	2160	14.0
20.0	42.0	37.0	22.0	37.5	-	1.2	2.5	800	2400	14.0
22.0	41.5	41.0	26.0	37.5	-	1.2	2.2	880	2640	14.0
25.0	41.5	41.0	26.0	37.5	-	1.2	2.0	1000	3000	14.0
30.0	42.0	45.0	30.0	37.5	-	1.2	1.6	1200	3600	14.0
33.0	42.0	45.0	30.0	37.5	-	1.2	1.5	1320	3960	14.0
40.0	57.5	45.0	30.0	52.5	20.3	1.2	2.6	800	2400	20.0
50.0	57.5	50.0	35.0	52.5	20.3	1.2	2.1	1000	3000	24.0
60.0	57.5	50.0	35.0	52.5	20.3	1.2	1.7	1200	3600	27.0

U _{rms} =250Vac U _N =350Vac U _{NDC} =475V										
C _N (μF)	W±1.0 (mm)	H±1.0 (mm)	T±1.0 (mm)	P±0.5 (mm)	b±0.5 (mm)	d±0.05 (mm)	R _{esr} @10kHz (mΩ)	İ (A)	İ _s (A)	I _{max} (A)
1.0	32.0	18.0	9.0	27.5	-	1.0	19.3	90	270	3.0
1.5	32.0	20.0	11.0	27.5	-	1.0	12.9	135	405	4.0
2.0	32.0	22.0	13.0	27.5	-	1.0	9.6	180	540	5.0
2.2	32.0	22.0	13.0	27.5	-	1.0	8.8	198	594	6.0
2.5	32.0	22.0	13.0	27.5	-	1.0	7.7	225	675	6.0
3.0	32.0	28.0	14.0	27.5	-	1.0	6.4	270	810	7.0
3.3	32.0	28.0	14.0	27.5	-	1.0	5.8	297	891	8.0
3.5	32.0	28.0	14.0	27.5	-	1.0	5.5	315	945	8.0
4.0	32.0	33.0	18.0	27.5	-	1.2	4.8	360	1080	10.0
4.5	32.0	33.0	18.0	27.5	-	1.2	4.3	405	1215	10.0
5.0	32.0	33.0	18.0	27.5	-	1.2	3.9	450	1350	11.0
6.8	32.0	37.0	22.0	27.5	-	1.2	2.8	612	1836	14.0
4.7	42.0	26.0	15.0	27.5	-	1.2	7.8	282	846	7.0
5.0	42.0	26.0	15.0	27.5	-	1.2	7.3	300	900	8.0
6.0	42.0	32.0	17.0	27.5	-	1.2	6.1	360	1080	9.0
6.5	42.0	32.0	17.0	37.5	-	1.2	5.6	390	1170	10.0
6.8	41.5	34.0	19.0	37.5	-	1.2	5.4	408	1224	10.0
7.5	41.5	34.0	19.0	37.5	-	1.2	4.9	450	1350	11.0
8.0	42.0	34.0	19.0	37.5	-	1.2	4.6	480	1440	12.0
10.0	42.0	37.0	22.0	37.5	-	1.2	3.7	600	1800	13.0
12.0	42.0	37.0	22.0	37.5	-	1.2	3.0	720	2160	14.0
15.0	42.0	41.0	26.0	37.5	-	1.2	2.4	900	2700	14.0

■ 外形尺寸 Dimensions (mm)

U _{rms} =250Vac U _N =350Vac U _{NDC} =475V										
C _N (μF)	W±1.0 (mm)	H±1.0 (mm)	T±1.0 (mm)	P±0.5 (mm)	b±0.5 (mm)	d±0.05 (mm)	R _{esr} @10kHz (mΩ)	İ (A)	I _s (A)	I _{max} (A)
18.0	42.0	45.0	30.0	37.5	-	1.2	2.0	1080	3240	14.0
20.0	42.0	45.0	30.0	37.5	-	1.2	1.8	1200	3600	14.0
22.0	42.0	45.0	30.0	37.5	-	1.2	1.7	1320	3960	14.0
25.0	57.5	45.0	30.0	37.5	20.3	1.2	3.3	750	2250	18.0
30.0	57.5	45.0	30.0	37.5	20.3	1.2	2.7	900	2700	20.0
35.0	57.5	50.0	35.0	37.5	20.3	1.2	2.3	1050	3150	23.0
40.0	57.5	50.0	35.0	37.5	20.3	1.2	2.0	1200	3600	25.0

U _{rms} =300Vac U _N =425Vac U _{NDC} =560V										
C _N (μF)	W±1.0 (mm)	H±1.0 (mm)	T±1.0 (mm)	P±0.5 (mm)	b±0.5 (mm)	d±0.05 (mm)	R _{esr} @10kHz (mΩ)	İ (A)	I _s (A)	I _{max} (A)
1.0	32.0	20.0	11.0	27.5	-	1.0	15.9	100	300	4.0
1.5	32.0	22.0	13.0	27.5	-	1.0	10.6	150	450	5.0
2.0	32.0	28.0	14.0	27.5	-	1.0	8.9	200	600	6.0
2.2	32.0	28.0	14.0	27.5	-	1.0	8.0	220	660	7.0
2.5	32.0	28.0	14.0	27.5	-	1.0	7.2	250	750	8.0
3.0	32.0	33.0	18.0	27.5	-	1.2	6.4	300	900	9.0
3.3	32.0	33.0	18.0	27.5	-	1.2	5.3	330	990	10.0
3.5	32.0	33.0	18.0	27.5	-	1.2	4.8	350	1050	10.0
4.0	32.0	33.0	18.0	27.5	-	1.2	4.6	400	1200	11.0
4.7	32.0	37.0	22.0	27.5	-	1.2	4.0	470	1410	13.0
5.0	32.0	37.0	22.0	27.5	-	1.2	3.4	500	1500	13.0
6.8	32.0	37.0	22.0	27.5	-	1.2	3.2	680	2040	14.0
3.0	42.0	26.0	15.0	37.5	-	1.2	10.1	210	630	6.0
3.3	42.0	26.0	15.0	37.5	-	1.2	9.2	231	693	7.0
3.5	42.0	26.0	15.0	37.5	-	1.2	8.6	245	735	7.0
4.0	41.5	32.0	17.0	37.5	-	1.2	7.6	280	840	8.0
4.5	41.5	32.0	17.0	37.5	-	1.2	6.7	315	945	9.0
4.7	41.5	32.0	17.0	37.5	-	1.2	6.4	329	987	9.0
5.0	41.5	34.0	19.0	37.5	-	1.2	6.0	350	1050	10.0
6.0	41.5	34.0	19.0	37.5	-	1.2	5.0	420	1260	11.0
6.8	42.0	37.0	22.0	37.5	-	1.2	4.4	476	1428	12.0
8.0	42.0	37.0	22.0	37.5	-	1.2	3.8	560	1680	13.0
10.0	41.5	41.0	26.0	37.5	-	1.2	3.0	700	2100	14.0
12.0	42.0	45.0	30.0	37.5	-	1.2	2.5	840	2520	14.0
15.0	42.0	45.0	30.0	37.5	-	1.2	2.1	1050	3150	14.0
18.0	57.5	45.0	30.0	52.5	20.3	1.2	3.8	720	2160	17.0
20.0	57.5	45.0	30.0	52.5	20.3	1.2	3.4	800	2400	18.0
22.0	57.5	45.0	30.0	52.5	20.3	1.2	3.1	880	2640	20.0
25.0	57.5	50.0	35.0	52.5	20.3	1.2	2.7	1000	3000	21.0
28.0	57.5	50.0	35.0	52.5	20.3	1.2	2.4	1120	3360	23.0

■ 外形尺寸 Dimensions (mm)

U _{rms} =350Vac U _N =480Vac U _{NDC} =600V										
C _N (μF)	W±1.0 (mm)	H±1.0 (mm)	T±1.0 (mm)	P±0.5 (mm)	b±0.5 (mm)	d±0.05 (mm)	R _{esr} @10kHz (mΩ)	İ (A)	I _s (A)	I _{max} (A)
0.33	32.0	18.0	9.0	27.5	-	0.8	53.9	36	109	1.6
0.39	32.0	18.0	9.0	27.5	-	0.8	46.0	43	129	1.7
0.47	32.0	18.0	9.0	27.5	-	0.8	38.6	52	155	1.9
0.68	32.0	20.0	11.0	27.5	-	0.8	27.5	75	224	2.5
0.82	32.0	22.0	13.0	27.5	-	0.8	23.3	90	271	3.0
1.0	32.0	22.0	13.0	27.5	-	0.8	19.6	110	330	3.2
1.5	32.0	28.0	14.0	27.5	-	0.8	14.0	165	495	4.2
2.0	32.0	30.0	16.0	27.5	-	0.8	11.1	220	660	5.0
2.2	32.0	30.0	16.0	27.5	-	0.8	10.4	242	726	5.2
2.5	32.0	33.0	18.0	27.5	-	1.0	7.0	275	825	6.2
3.0	32.0	33.0	18.0	27.5	-	1.0	6.1	330	990	6.5
3.3	32.0	37.0	22.0	27.5	-	1.0	5.3	363	1089	7.4
3.5	32.0	37.0	22.0	27.5	-	1.0	5.0	385	1155	7.7
4.0	32.0	37.0	22.0	27.5	-	1.0	4.4	440	1320	7.9
1.5	42.0	26.0	15.0	27.5	-	1.0	19.3	113	338	8.2
2.0	42.0	26.0	15.0	27.5	-	1.0	14.9	150	450	2.8
2.2	42.0	26.0	15.0	27.5	-	1.0	13.7	165	495	3.7
2.5	42.0	30.0	16.0	37.5	-	1.0	12.3	188	563	4.6
3.0	42.0	30.0	16.0	37.5	-	1.0	10.5	225	675	4.8
3.3	41.5	32.0	17.0	37.5	-	1.0	9.7	248	743	5.3
3.5	41.5	32.0	17.0	37.5	-	1.0	9.3	263	788	5.7
4.0	41.5	34.0	19.0	37.5	-	1.0	8.3	300	900	6.2
4.5	42.0	37.0	22.0	37.5	-	1.0	7.6	338	1013	6.4
5.0	42.0	37.0	22.0	37.5	-	1.0	7.0	375	1125	7.0
5.5	42.0	37.0	22.0	37.5	-	1.0	6.6	413	1238	8.0
6.0	42.0	44.0	24.0	37.5	-	1.0	6.2	450	1350	8.3
6.5	41.5	44.0	24.0	37.5	-	1.0	5.8	488	1463	8.6
7.0	41.5	44.0	24.0	52.5	-	1.0	5.5	525	1575	9.7
7.5	41.5	41.0	26.0	52.5	-	1.0	5.3	563	1688	10.0
8.0	41.5	41.0	26.0	52.5	-	1.0	5.1	600	1800	10.3
8.5	42.0	43.0	30.0	52.5	-	1.0	4.9	638	1913	10.5
9.0	42.0	45.0	30.0	52.5	-	1.0	4.7	675	2025	10.5
9.5	42.0	45.0	30.0	52.5	-	1.0	4.5	713	2138	10.5
10.0	42.0	45.0	30.0	52.5	-	1.0	4.4	750	2250	10.5
10.0	57.5	45.0	30.0	52.5	20.3	1.2	5.7	450	1350	11.6
11.0	57.5	45.0	30.0	52.5	20.3	1.2	5.3	495	1485	11.9
12.0	57.5	45.0	30.0	52.5	20.3	1.2	4.4	540	1620	14.1
15.0	57.5	45.0	30.0	52.5	20.3	1.2	3.7	675	2025	16.4
16.0	57.5	50.0	35.0	52.5	20.3	1.2	3.5	720	2160	16.8
18.0	57.5	50.0	35.0	52.5	20.3	1.2	3.2	810	2430	18.1
20.0	57.5	50.0	35.0	52.5	20.3	1.2	2.9	900	2700	19.8